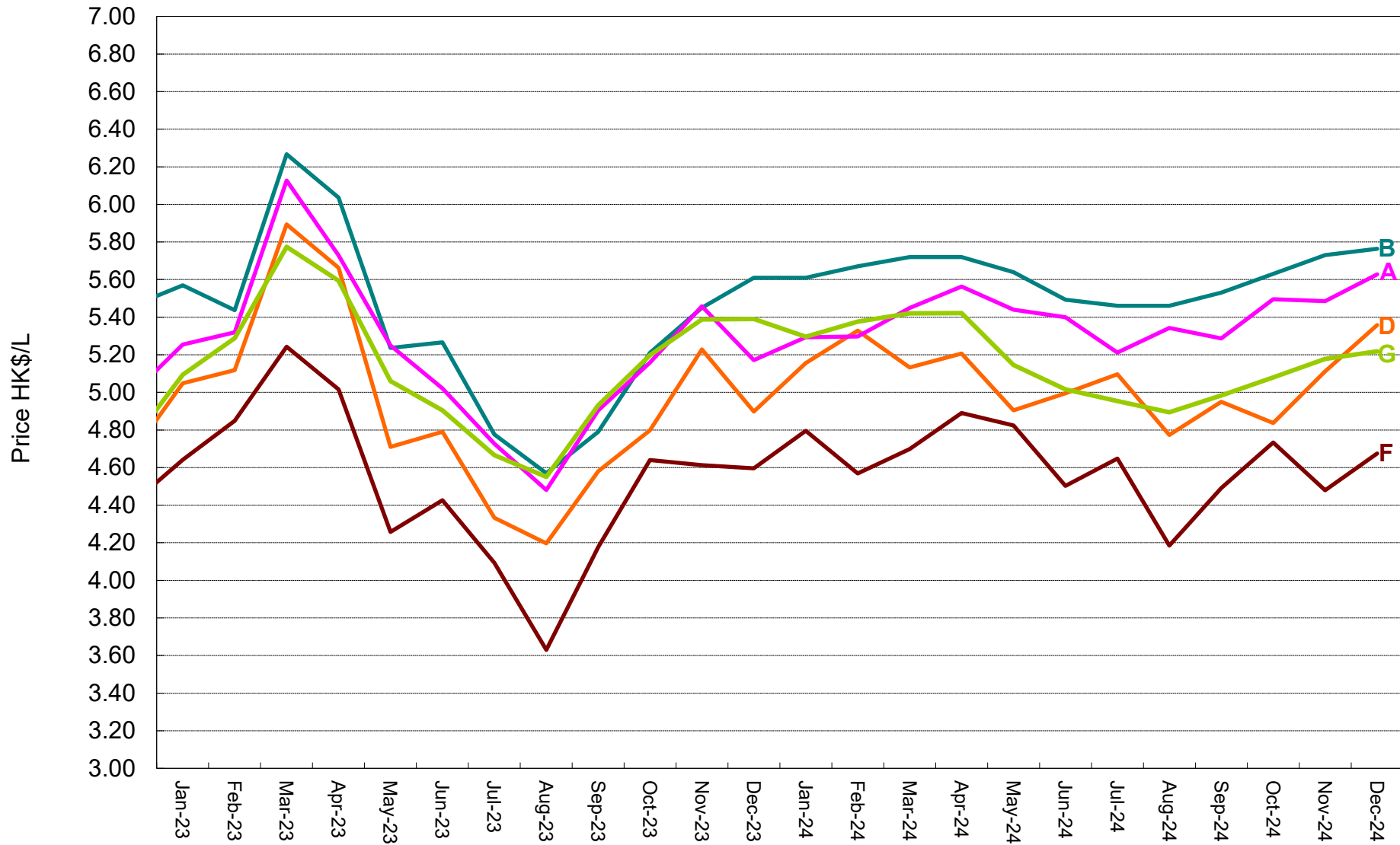


Price Tracking - Auto-LPG 2023 - 2024



Since oil companies "C" and "D" were merged as "D", the retail prices of both "C" and "D" has been aligned and represented as "D" starting from Aug 2003. Since the oil company "E" disposed of its auto-fuel business in HK to "F" on Jun 2007, the retail price of "E" has been replaced by "F" starting from Oct 2007. Since Jul 2018, the total number of selected filling stations surveyed in each month has been increased so as to reduce the errors arising from sample selection.