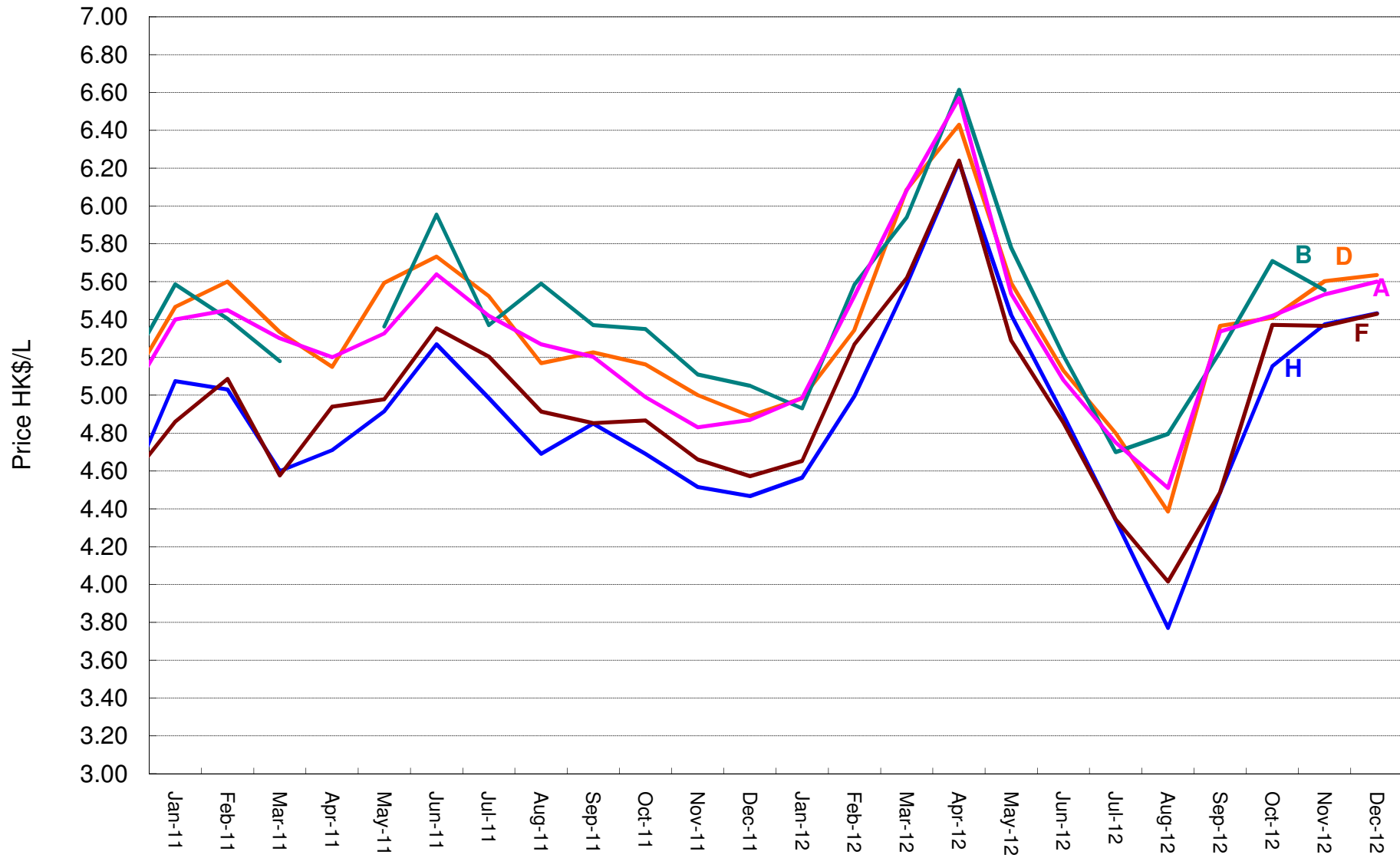


Price Tracking - Auto-LPG 2011 - 2012



Since oil companies "C" and "D" were merged as "D", the retail prices of both "C" and "D" has been aligned and represented as "D" starting from Aug 2003. Since the oil company "E" disposed of its auto-fuel business in HK to "F" on Jun 2007, the retail price of "E" has been replaced by "F" starting from Oct 2007.

Since there is no auto-LPG supply from the oil company "B" in Dec 2012, no corresponding price can be recorded for this month.